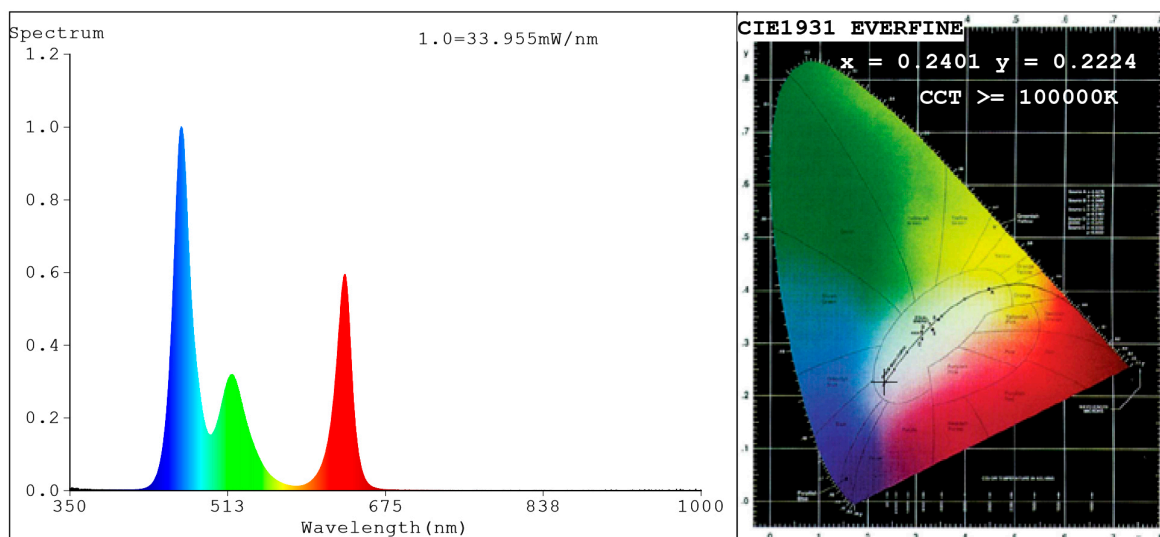


## Spectrum Test Report



### Color Parameters:

Chromaticity Coordinate:  $x=0.2401$   $y=0.2224$   $u'=0.1851$   $v'=0.3858$   
 CCT=100000K (Duv=-0.0098) Dominant WL:Ld =473.1nm Purity=42.8%  
 Ratio:R=24.2% G=58.8% B=17.0%; Peak WL:Lp=464.6nm FWHM=20.0nm  
 Render Index:Ra=29.4 CRI=27.1 TM30:Rf=30 Rg=115  
 R1 =6 R2 =30 R3 =55 R4 =35 R5 =32 R6 =32 R7 =46  
 R8 =0 R9 =0 R10=0 R11=30 R12=36 R13=6 R14=71 R15=0

### Photo Parameters:

Flux = 325.1 lm Eff. : 34.18 lm/W Fe = 1.680 W Scotopic:1494.8 S/P:4.5981

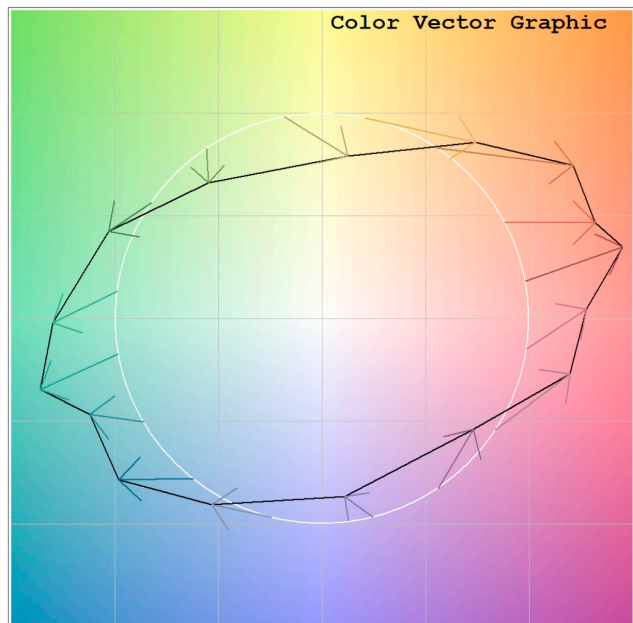
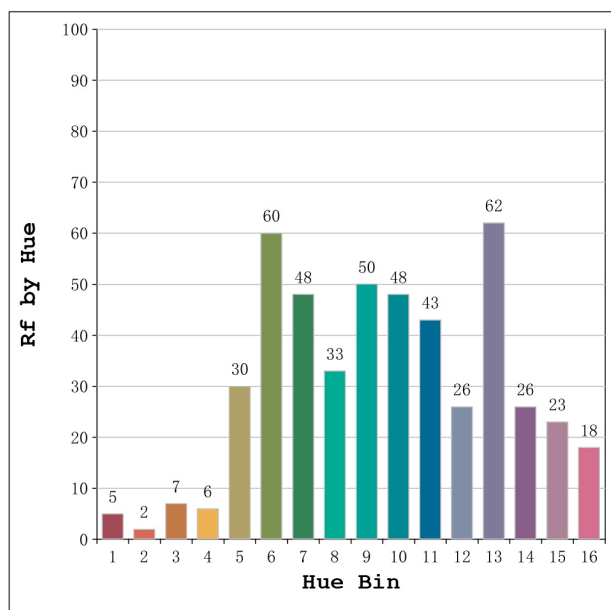
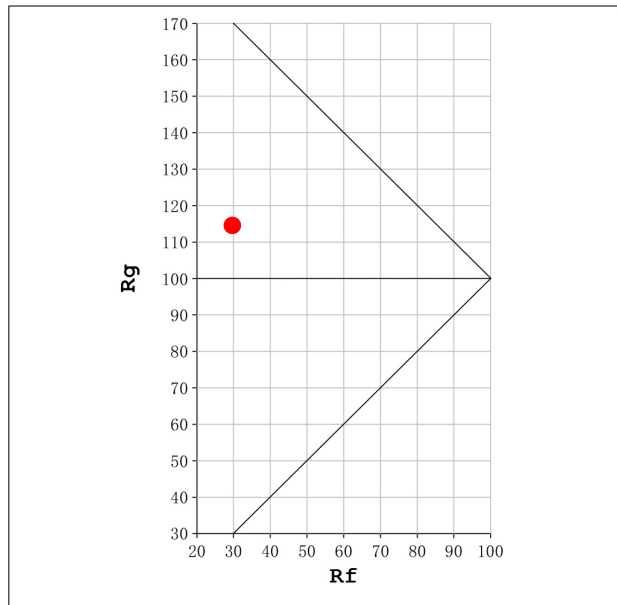
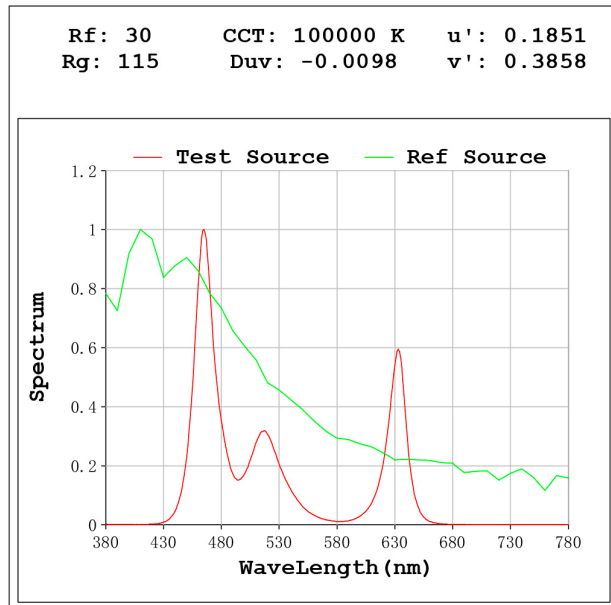
### Electrical parameters:

V = 11.998 V I = 0.7927 A P = 9.511 W PF = 1.000

Status: Integral T = 825 ms Ip = 49681 (76%)

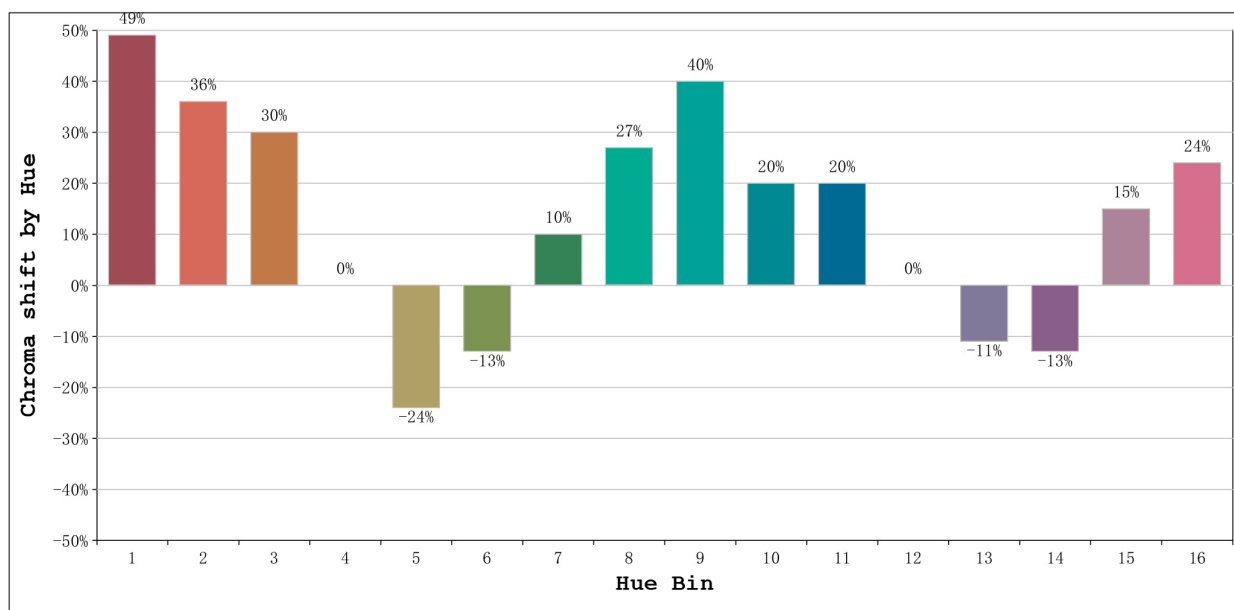
Model:Ecoled Jerez RGB  
 Tester:Sergio Carneros  
 Temperature:21Deg  
 Manufacturer:Luz Negra S.L

Number: 32.028  
 Date:25-5-2021  
 Humidity:57%  
 Remarks:100cm de tira flexible



Model:Ecoled Jerez RGB  
 Tester:Sergio Carneros  
 Temperature:21Deg  
 Manufacturer:Luz Negra S.L

Number: 32.028  
 Date:25-5-2021  
 Humidity:57%  
 Remarks:100cm de tira flexible



Hue Bin	Hue Angle	Rf	Graphic shift(%)	
			Chroma	Hue
1	0.0° - 22.5°	5	49	7
2	22.5° - 45.0°	2	36	-24
3	45.0° - 67.5°	7	30	-58
4	67.5° - 90.0°	6	0	-54
5	90.0° - 112.5°	30	-24	-26
6	112.5° - 135.0°	60	-13	8
7	135.0° - 157.5°	48	10	23
8	157.5° - 180.0°	33	27	22
9	180.0° - 202.5°	50	40	10
10	202.5° - 225.0°	48	20	-16
11	225.0° - 247.5°	43	20	-28
12	247.5° - 270.0°	26	0	-28
13	270.0° - 292.5°	62	-11	-10
14	292.5° - 315.0°	26	-13	30
15	315.0° - 337.5°	23	15	43
16	337.5° - 360.0°	18	24	25

Model:Ecoled Jerez RGB  
 Tester:Sergio Carneros  
 Temperature:21Deg  
 Manufacturer:Luz Negra S.L

Number: 32.028  
 Date:25-5-2021  
 Humidity:57%  
 Remarks:100cm de tira flexible